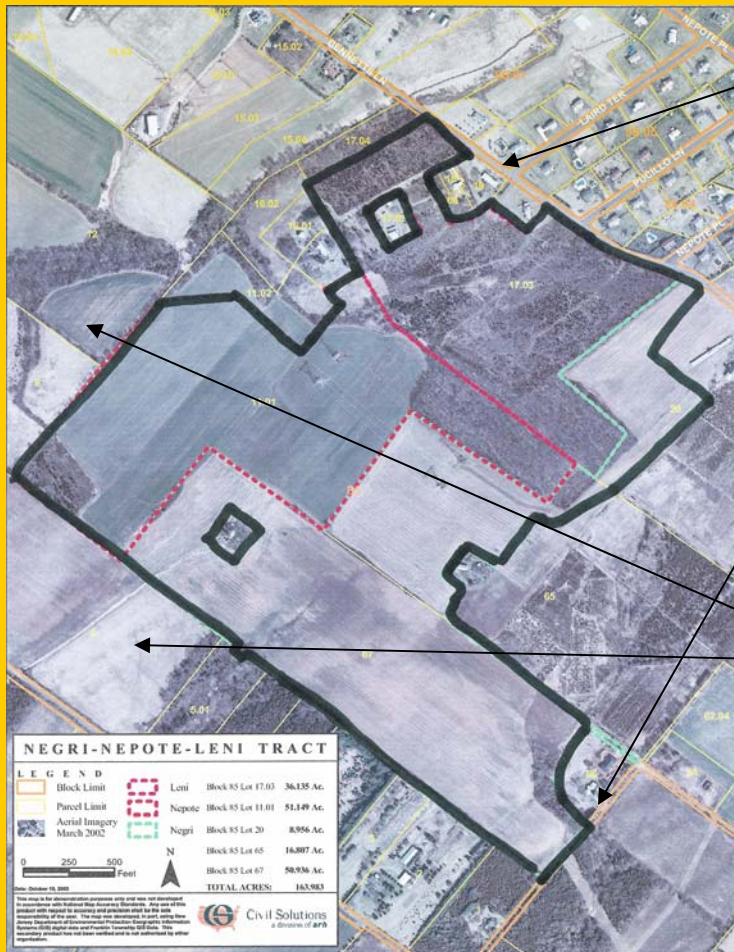


Franklin Township Open Space Advisory Committee

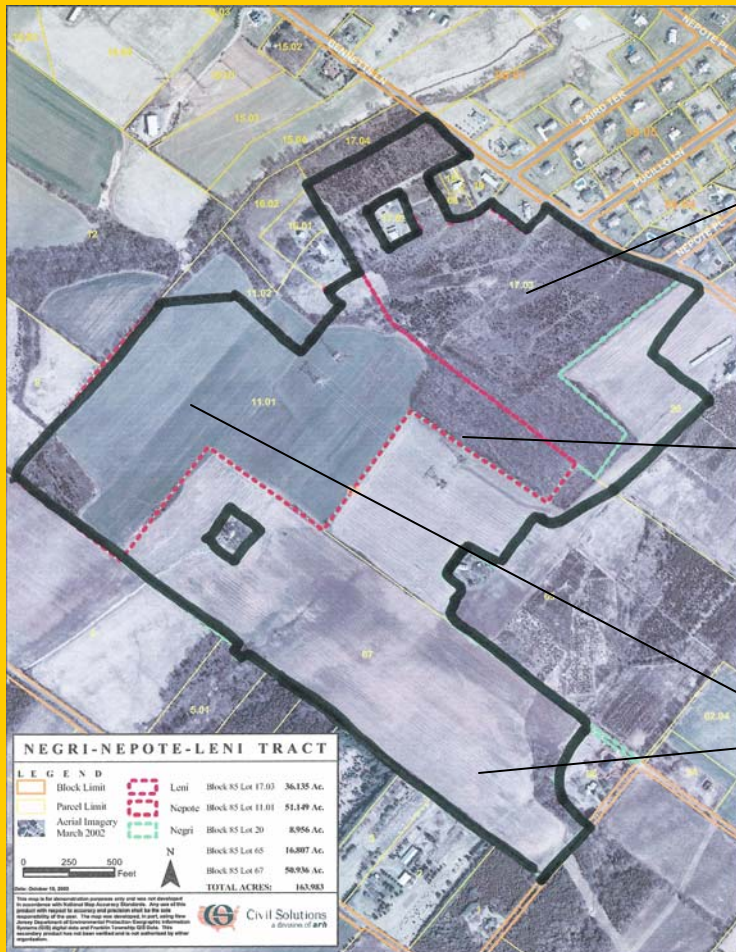
March 23, 2003

163-acre Negri-Nepote-Leni Grasslands Tract



- Bordered by Bennetts Lane to the north
- Skillmans Lane to the south
- Six Mile Run Reservoir Site to the west and southwest

163-acre Negri-Nepote-Leni Grasslands Tract



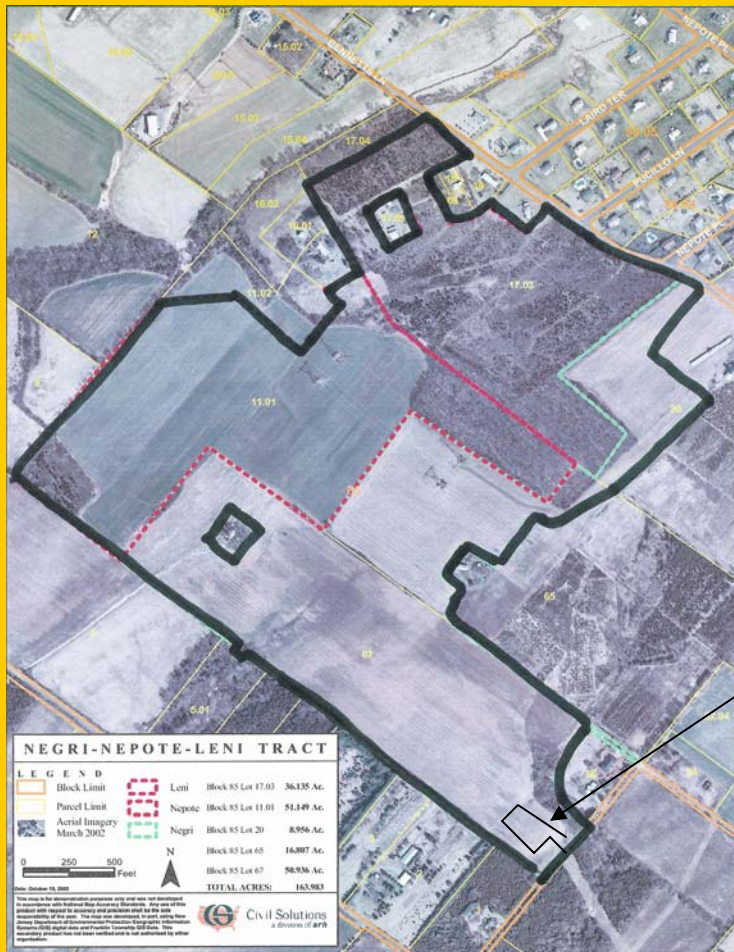
This site contains:

- Approximately 42-acres of early-successional shrubs and small trees
- Approximately 10-acres of a mature hardwood-forest
- Approximately 111-acres of fields

163-acre Negri-Nepote-Leni Grasslands Tract



163-acre Negri-Nepote-Leni Grasslands Tract



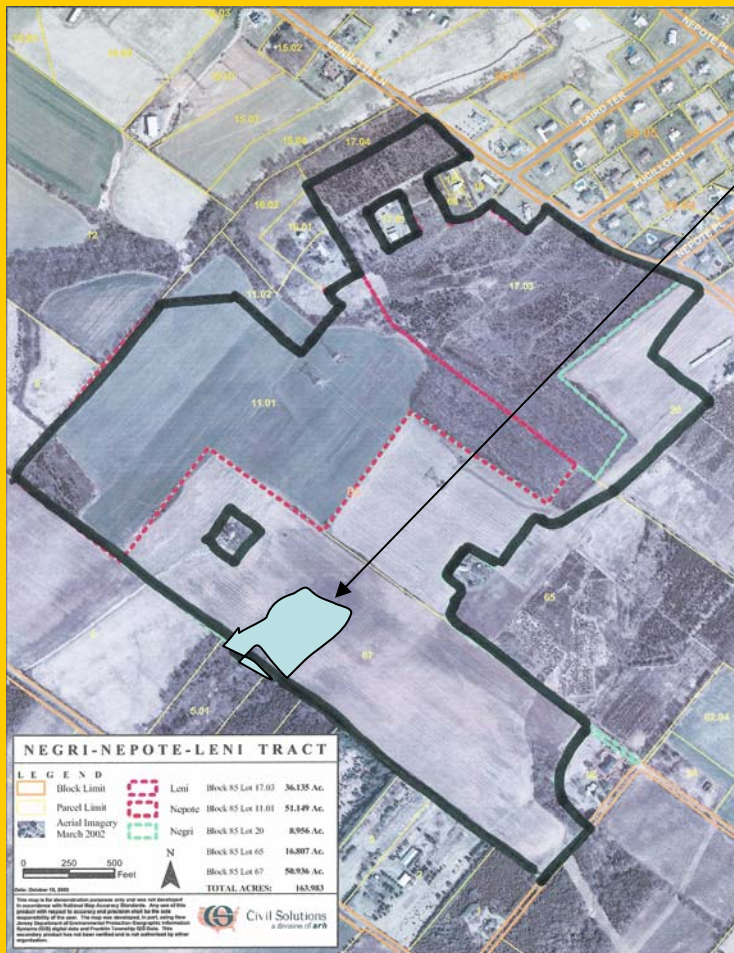
- Trails are being proposed to be developed around the field edges, through the forest and into the early successional area
- An eight-car gravel parking lot is proposed off of Skillmans Lane

163-acre Negri-Nepote-Leni Grasslands Tract

Near the parking lot,
an informational kiosk
will be built by an
Eagle Scout



163-acre Negri-Nepote-Leni Grasslands Tract



- It is proposed that we create a 2.5-acre wetlands or vernal pool area in an area that is already naturally wet area
- This area would remain wet for much of the year and would attract amphibians, such as frogs and salamanders

163-acre Negri-Nepote-Leni Grasslands Tract



- The 111-acres that are in fields are being proposed to be managed in warm-season native grasses



Big bluestem grass