



SOMERSET COUNTY



TALKING TRASH



A Message From The 2009 Somerset County Board of Chosen Freeholders

Welcome to the 10th annual edition of "Talking Trash," a special newsletter and how-to guide highlighting Somerset County's award-winning recycling and solid waste management programs.

Mandatory recycling in Somerset County is now in its 22nd year. In accordance with state law, both residents and businesses must recycle. The county has provided convenient curbside pickup of recyclables in all 21 towns since 1987.

Somerset County was the first county in New Jersey to voluntarily establish a curbside recycling program.

Starting January 1, 2009, the Board of Chosen Freeholders announced the expansion of the residential curbside recycling program to now include CHIPBOARD. Chipboard items include cereal, pasta, cake, cookie, cracker, tissue, detergent, gift, shoe, shirt and retail boxes, poster board and the backing of writing pads. All plastic liners must be removed before recycling. Residents are encouraged to recycle chipboard with corrugated cardboard and place the tied bundle next to the blue recycling bucket on scheduled collection days.

Curbside collection offers a convenient way for households to recycle a variety of materials, including steel, bimetal and aluminum cans, glass and plastic bottles (PETE 1 and HDPE 2), newspapers, chipboard, corrugated cardboard, shredded paper, junk mail, other papers, magazines and household-size dry-cell batteries. All items for recycling should be placed by the curb no later than 7 a.m.

Recycling is beneficial for the environment because it protects habitats, saves natural resources and produces less pollution than traditional methods of waste disposal. It also is required by law in New Jersey. Somerset County sells recycled materials to generate revenues that help to offset recycling costs for taxpayers. Recycling also saves residents money by reducing landfill disposal costs.

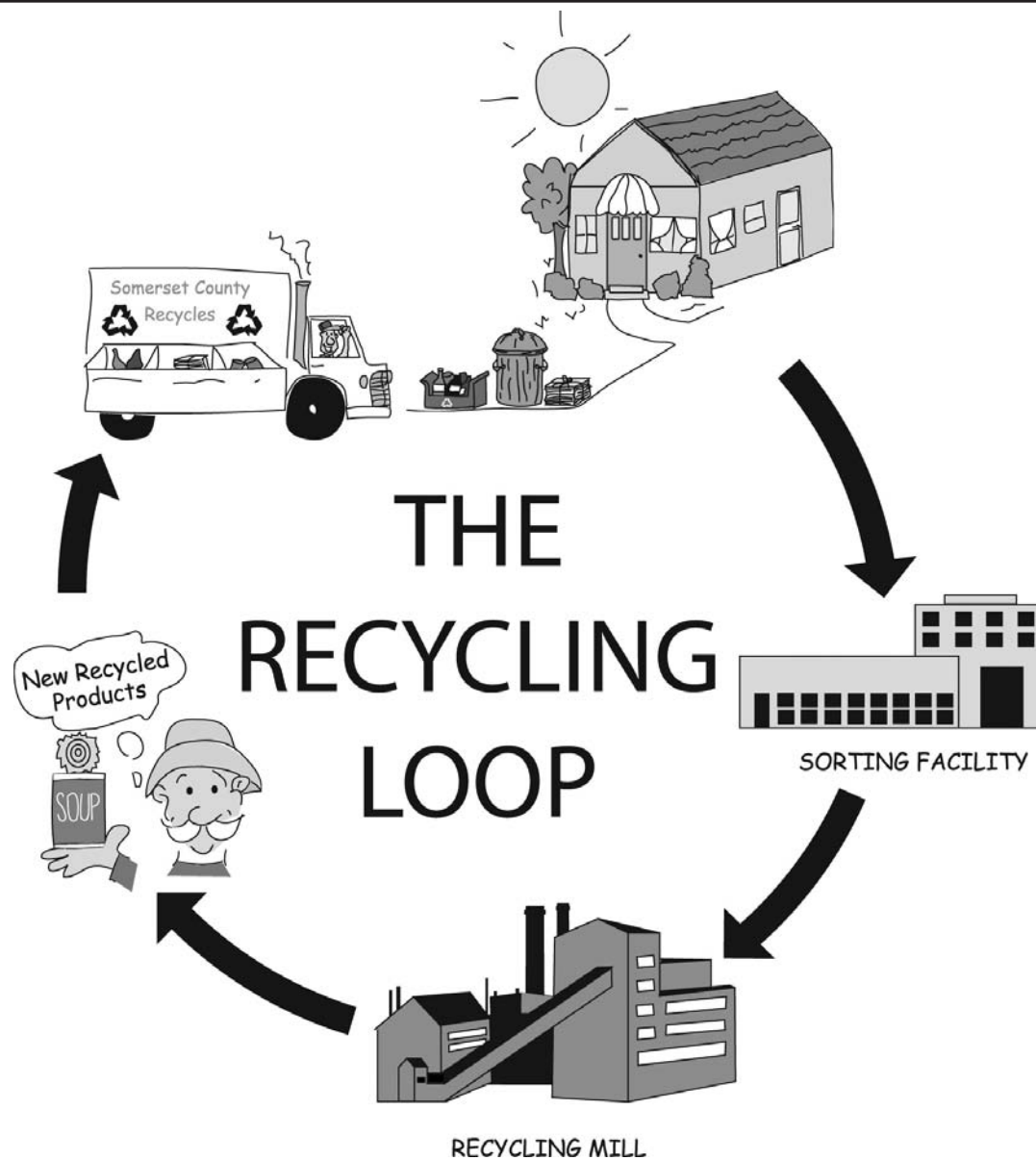
Somerset County's solid waste management strategy is more than recycling. Since 1985, we've offered periodic Household Hazardous Waste Drop-off Days at different locations around the county.

We hope you will find this newsletter informative and helpful. If you have any questions or suggestions, please contact our Division of Solid Waste Management at (908) 231-7109 or at solidwaste@co.somerset.nj.us. Please help us to even further improve one of the best county recycling programs in New Jersey.

**Rick Fontana, Freeholder Director • Jack M. Ciattarelli, Freeholder Deputy Director
Peter S. Palmer, Freeholder • Robert Zaborowski, Freeholder • Patricia L. Walsh, Freeholder**

In This Issue...

How-To Guide.....	3	County Road Cleaner.....	12	Environmental Grants.....	16
Recycling 101: Hows & Whys.....	4	Tire Storage/West Nile Virus.....	12	Household Hazardous	
Odds & Ends.....	6	What is Non-point Source Pollution?.....	13	Waste Day Schedule.....	17
Backyard Composting.....	9	Commercially Generated Electronics.....	14	Saturday Drop-Off Program.....	18
Reduce, Reuse & Then Recycle.....	9	Recycling Guide for Businesses,		2009 Recycling Schedule.....	19
Composting Cycle.....	10	Institutions & Industries.....	15	Municipal Recycling Coordinators.....	20
		Recycling Tours.....	16		



THE RECYCLING LOOP

RECYCLING COSTS MONEY

- Collection, transport and processing of recyclables all cost money.
- Capital investments such as equipment and containers cost money.
- Labor for recycling costs money.

RECYCLING SAVES MONEY

- Recycling materials costs less than manufacturing products from virgin resources.
- Through recycling, materials are not sent to landfills or incinerators, where it costs at least \$70 for each ton disposed.
- Recycling saves money through conservation of natural resources and energy.

RECYCLING MAKES MONEY




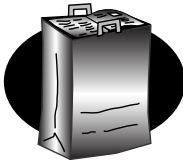


- Depending upon the quality and demand, marketing of recyclables can yield revenue.

What am I required to recycle?

To comply with State, County and local laws, residents (including multifamily units), governments, institutions and commercial establishments (offices, retail, restaurants, warehouses, construction sites, etc.) are required to separate the following materials that are generated at your location:

SOMERSET COUNTY RECYCLING HOW-TO GUIDE



How To Prepare		Acceptable Items
	<p>NEWSPAPERS Newspapers must be bundled and tied with string or twine.</p>	<ul style="list-style-type: none"> • Newspaper • Inserts that come w/newspaper, such as: comics, glossy coupons, TV/magazine sections & colored food/store ads. 
	<p>GLASS BOTTLES, PLASTIC BOTTLES (1 & 2), STEEL, BIMETAL & ALUMINUM CANS These items should be rinsed thoroughly and placed inside your recycling bucket. Only the items listed on the right are acceptable.</p>	<ul style="list-style-type: none"> • Glass bottles (all colors) • Glass jars (all colors) • Steel cans • Bimetal cans • Aluminum cans • Plastic water bottles • Plastic soda bottles • Plastic detergent bottles • Plastic milk containers • Plastic bottles with a #1 or #2 in a recycling triangle, and with a neck smaller than the body
	<p>OTHER PAPER/JUNK MAIL Other paper should be placed in a brown paper bag or cardboard box and placed next to your blue bucket.</p>	<ul style="list-style-type: none"> • Magazines • Writing/school paper • All envelopes • Copy paper • Paperback books • Hardcover books w/hard covers removed • Catalogs • Phone books • Store fliers w/ mailing labels • Office paper • Non-metallic gift wrap • Greeting cards
	<p>CORRUGATED CARDBOARD & CHIPBOARD Corrugated cardboard must be cut into 2 ft. x 2 ft. squares and tied with string or twine. Please include chipboard with corrugated cardboard. Place tied bundle (chipboard & cardboard) next to your recycling bucket.</p>	<ul style="list-style-type: none"> • Corrugated cardboard • Brown bags • Chipboard: Boxes- cereal, cookie, pasta, cake, cracker, detergent (remove plastic liners), gift, shoe, shirt or any retail boxes. Poster board & backing on writing pads.
	<p>BATTERIES Place dry-cell batteries only in sealed plastic zip-top bags and place inside your recycling bucket.</p>	<ul style="list-style-type: none"> • Radio batteries • Toy batteries • Watch batteries • Calculator batteries



If you are aware of any multifamily complex or business that is not recycling, or if you see a garbage hauler mix previously separated recyclables and garbage, please call the Somerset County Health Department at 908-231-7155. They conduct inspections of these locations and haulers to ensure recycling requirements are being followed.

RECYCLING 101: The Hows and Whys



Polyethylene Terephthalate (PETE)



High Density Polyethylene (HDPE)

Plastics Are NOT Alike

Plastics can be very confusing because each type is made up of different chemical components and melts at different temperatures. Therefore, it is essential that only like types get recycled together. Plastic manufacturers are developing recycling programs for many types of plastics (known as resins) but currently only **Polyethylene Terephthalate (PETE #1) and High-Density Polyethylene (HDPE #2) with necks** are accepted by the **Somerset County Recycling Center.**

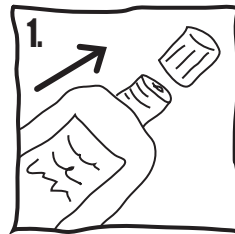
Plastics marked # 3 - # 7 should be disposed of in your trash.

Better Recycling Increases Recycling Revenues for Taxpayers

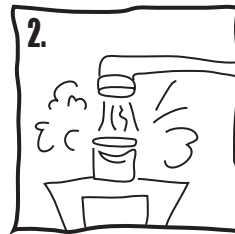
Sorting of different types of plastic into bales is essential to producing high-quality recycled products. The numbers noted above are part of a voluntary, standardized coding system implemented by plastics manufacturers. Check the bottom of the container and you should see the recycling symbol with a number in the center. You can place your #1 and #2 bottles with necks smaller than body of the container in your recycling bucket. **Containers like margarine tubs, diaper wipes and yogurt may be marked #1 or #2, but they are manufactured by an injection-mold process that is not compatible with blow-molded bottles with smaller necks. They should be disposed of in the trash.** Discard caps as they usually are made of different plastic resin designed to withstand the rigors of twisting and turning. To increase the efficiency of plastics recycling, residents should crush bottles to save space. When shopping, choose plastic containers you know you can recycle as opposed to ones that must be thrown in the trash.

Fit more in your bucket!

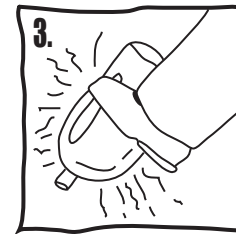
This recycling tip makes the container easy to flatten.



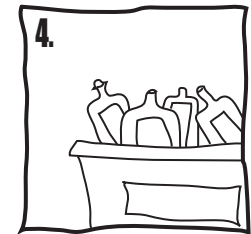
1. Remove cap



2. Rinse with hot water



3. Flatten container



4. Put in recycling bucket

RECYCLING 101: The Hows and Whys

(continued)

INTERNET RESOURCES

www.co.somerset.nj.us (Somerset County's official Web site)

www.njhazwaste.com

(Association of NJ Household Hazardous Waste Coordinators)

www.anjr.com (Association of NJ Recyclers)

www.state.nj.us/dep/dsw

(NJ DEP Division of Solid & Hazardous Waste)

www.nj.gov/dep/dshw/recycling (NJ DEP-Recycling in NJ)

www.state.nj.us/bpu/divisions/cleanenergy

(NJ Board of Public Utilities-Clean Energy)

www.ifplantscouldtalk.rutgers.edu

(Rutgers Cooperative Extension Service)

www.epa.gov/region02 (USEPA Region 2 Homepage)

www.epa.gov/region02/superfund/

(USEPA Region #2 Superfund sites)

www.nrc-recycle.org (National Recycling Coalition)

www.edf.org (Environmental Defense Fund)

www.nrdc.org (National Resources Defense Council)

www.informinc.org (INFORM)

www.njclean@comcast.net (NJ Clean Communities Council)

www.rbrc.org

(Recycling Rechargeable Batteries.....lists of locations)

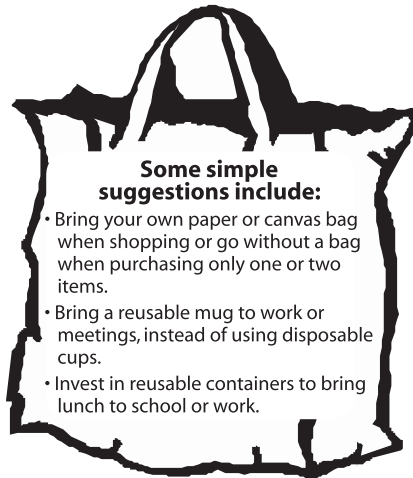
www.earth911.org (Earth's 911)

ENVIRONMENTAL SHOPPING & WASTE PREVENTION

What is it?

In addition to recycling, reusing and composting your waste, there are steps you can take to ensure that the non-recyclable waste you create is minimal – steps you can take BEFORE the garbage is created.

WASTE PREVENTION means reducing the volume and toxicity of waste destined for disposal in our landfills. To individual consumers this concept is called environmental consumerism or green shopping. It means that you consider the health of the environment when spending your consumer dollar. By selecting products and packages that are environmentally sound, you take an active role in decreasing waste!



Some simple suggestions include:

- Bring your own paper or canvas bag when shopping or go without a bag when purchasing only one or two items.
- Bring a reusable mug to work or meetings, instead of using disposable cups.
- Invest in reusable containers to bring lunch to school or work.

How do I get started?

Don't just recycle what you buy. Make it a point to buy what you can recycle! Take a look at what is in your garbage – the part that you're not recycling. Does it consist of a lot of disposable, one-use products? Is there a great deal of excess packaging? Are there toxic chemicals in there? If so, figure out what steps you can take to eliminate these items from your daily life. For example, disposable razors could be replaced with reusable razors. Many items can be purchased without the package. Vinegar, lemon juice and borax can take the place of many common household cleaners.

Make changes that are compatible with your lifestyle, so you will be more likely to keep them up.

Be a "Green" Shopper

Follow these simple rules:

1. **DON'T BUY WHAT YOU DON'T NEED!**
2. **WHEN YOU DO MAKE PURCHASES, CHOOSE PRODUCTS THAT ARE DURABLE AND REUSABLE, NOT DISPOSABLE.**
3. **WHEN BUYING DISPOSABLES, CHOOSE PRODUCTS IN RECYCLABLE PACKAGES AND RECYCLE THEM.** Also select packages that are recycled. Purchasing recycled products completes the recycling loop.
4. **SELECT PRODUCTS WITH THE LEAST AMOUNT OF PACKAGING.**
5. **CHOOSE PRODUCTS THAT ARE SAFE AND NONTOXIC.**
6. **LET YOUR VOICE BE HEARD!** Tell people what you think! Tell store managers, manufacturers and legislators!

Check out these Web sites:

www.treehugger.com • www.recycledproducts.com

ODDS & ENDS

Home-Generated Medical Waste

Improper management of discarded needles and other sharps can pose a health risk to recycling and waste workers. For example, discarded needles may expose recycling and waste workers to potential needle-stick injuries and potential infection when containers break open inside garbage trucks or needles are mistakenly sent to recycling facilities. Janitors and housekeepers also risk injury if loose sharps poke through plastic garbage bags. Used needles can transmit serious diseases, such as HIV and hepatitis.

Many hospitals in and around Somerset County participate in the New Jersey Hospital Association's Safe Syringe Program. Hospitals provide sharps containers to the home generators that the generator returns to the hospitals when the container is full. Contact the hospitals listed below for further information.

St. Peter's Hospital- New Brunswick

732-745-8600 ext. 8282
Safe Syringe Program

Princeton Medical Center-Princeton

609-497-4266
Environmental Services

Somerset Medical Center-Somerville

908-685-2200 ext. 3258
Safe Syringe Program

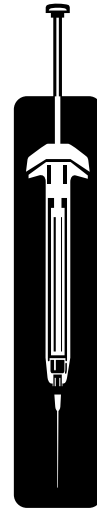
Hunterdon Medical Center-Flemington

908-237-6920
Diabetic Dept.

Additional information about the Safe Syringe Disposal Program maybe obtained by contacting:
New Jersey Hospital Association • 760 Alexander Road, Princeton, NJ 08543 • 609-273-4058

NOTE: UNDER NO CIRCUMSTANCES SHOULD NEEDLES EVER BE PUT IN ANY TYPE OF CONTAINER AND PLACED OUT FOR RECYCLING COLLECTIONS. THIS IS VERY HAZARDOUS TO ALL PERSONNEL HANDLING RECYCLING COLLECTIONS. DO NOT BRING NEEDLES TO HOUSEHOLD HAZARDOUS WASTE COLLECTIONS!

Waste Management, a waste hauling company, has a "Sharps Disposal by Mail" program. Participants are provided with an approved disposal container and mail full containers for disposal using the U.S. Postal Service. Interested parties can call Waste Management for prices & details at **877-WASTE-MD**.



Guidelines for Proper Disposal of Household Medication

New Jersey Department of Environmental Protection

Over-the-counter and prescription medications should not be disposed of down the drain because wastewater treatment facilities are not designed to remove pharmaceutical compounds and they may end up in your local waterways, and may eventually be found in drinking water. Properly disposing of unwanted and expired prescriptions and over-the-counter medications in the trash promotes a healthy aquatic environment and prevents accidental poisoning and intentional abuse.

4 STEPS FOR PROPER DISPOSAL

1. Keep medicine in original containers. Mark out personal information on prescription bottles.
2. Mix liquid medicine with undesirable substances like coffee grinds, cat litter or dirt. Dilute pills with water, then add coffee grinds, cat litter or dirt.
3. Place bottles in an opaque container, like a yogurt container, and secure the lid; or wrap in a dark-colored plastic bag.
4. Hide the container in the trash. Do **NOT** recycle.

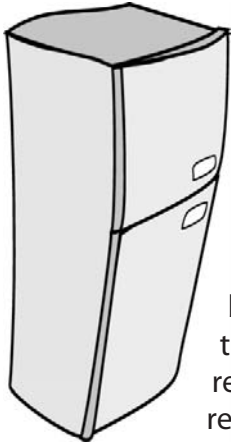
For more information contact: DEP Solid & Hazardous Waste Program • 609-633-1418

For proper disposal of household sharps visit:

www.state.nj.us/health/eoh/phss/syringe.pdf or call **609-984-6620**

ODDS & ENDS

(continued)



“What Does My Refrigerator Have To Do with Clean Air?”

You may have discovered that you are having difficulty getting rid of that old refrigerator or air conditioner. This is due to regulations implementing the Federal Clean Air Act.

These regulations affect, among other things, the disposal of appliances (such as air conditioners, refrigerators, freezers and dehumidifiers) that contain refrigerants. The refrigerants in these appliances often are composed of CFCs (chlorofluorocarbons – often called by their brand name, “Freon”) which, when released into the atmosphere, deplete the ozone layer. The regulations call for the recapturing of CFCs during recycling to prevent damage to the atmosphere.

Here are some companies that will remove CFCs:

Klein Recycling, Hillsborough	908-722-2288
Appliance Master, Flemington	1-800-752-7123
North Pole Air, Middlesex	732-271-7732
Blue Star Recycling, Raritan	908-722-7984



Agencies Accepting Usable Goods

Goodwill Industries (No Pick-Ups)	973-481-2300
Salvation Army (No Pick-Ups)	609-599-9801
Rescue Mission of Trenton	800-528-8825
Goodwill, East Brunswick	732-651-1091



Styrofoam® Disposal

Styrofoam® cups, containers and trays are not accepted as recyclables in Somerset County. A form of plastic called polystyrene, Styrofoam® presents a problem because not only is it non-biodegradable (it won't break down naturally), but it also cannot be recycled and made into new Styrofoam®. Though bad for our environment, Styrofoam® cups and containers are still quite popular; each year Americans throw away 25 billion Styrofoam® cups. Reduce the waste! Choose paper alternatives over Styrofoam® plates and containers, invest in a plastic hot-coffee mug that can be reused every day, and bring foam peanuts from packages to shipping businesses that accept plastic packaging peanuts for reuse. (Information provided by Environmental Systems of America, Inc.).

The following local businesses accept Styrofoam® peanuts for reuse. Please call ahead for business hours:

UPS Store locations*:

422 Rt. 202-206 North, Bedminster • (908) 781-2697 • 16 Mt. Bethel Road, Warren • (908) 226-8760

***or call 1-800-828-2214 for the location of a participating store near you • www.upstore.com**

Foam Pack Industries

Large pieces of Styrofoam® or polystyrene will be accepted. If more than one bag, call for an appointment
Mon. - Fri. 8-4 p.m. • Springfield, New Jersey • (973) 376-3700 • *(Pieces must be white and clean)*

Polystyrene Packaging Council For more information about Styrofoam®,
call (703) 741-5649 or visit their website at www.polystyrene.org

www.loosefillpackaging.com

ODDS & ENDS

(continued)

Smoke Detector Disposal

The most common type of smoke detector contains a small amount of Americium 241, a radioactive material. On your wall, this material poses little threat; however, when a detector is broken open in an incinerator or landfill, it can present a health hazard. For this reason, all detectors, by law, must be labeled as to radioactive content. Detector companies must accept returned radioactive detectors for disposal as hazardous waste.

Homeowners can mail smoke alarms/detectors back to the appropriate manufacturer (see listing below, call before mailing). They should be marked "For Disposal" and sent by surface or UPS ground mail (not air mail).

Life Saver/Frynetics, Inc.

1055 Stevenson Court
Suite 102W
Roselle, IL 60172

Code One/Firex

Maple Chase Products
2820 Thatcher Road
Downers Grove, IL 60515
1-800-445-8299

First Alert Family

3901 Liberty Road
Aurora, IL 60504-2495
1-800-323-9005

Dicon

3334 Main Street
Skokie, IL 60076

Safety's Sake/Funtech

388 North Ellicott Creek Road
Amherst, NJ 14228
1-800-877-1250

Commercial Stretch Wrap Recycling MCC SERVICES, INC.

Cranbury, NJ • (732) 605-0002

Accepting stretch & shrink wrap, heavier wrapping films, and shipping bags

CarpetCycle, L.L.C.

Carpeting will be recycled and accepted. Call for an appointment to drop-off: Elizabeth, New Jersey
908-353-5900

Carpeting and foam padding must be clean & dry. No wet carpet will be accepted. Retailers may call for bulk pick-up arrangements.

LASER SAVE Recycle empty toner cartridges.

Call to arrange
pick-ups at:

1-800-969-3339

Freehold, New Jersey

Post-Consumer & Industrial Vinyl such as siding, windows, doors and flooring, plumbing, pallets, etc. may be dropped off for recycling at: **East Coast Recycling** • 856-327-8888
Millville, New Jersey

EYEGLASSES

New Eyes for the Needy, a non-profit organization, accepts old eyeglasses for distribution to needy recipients in the U.S. and overseas. Glasses are used in two ways: Plastic-framed glasses are examined to determine the strength of the lenses and then shipped overseas. Metal frames are melted down, and the money made on the sale of the metals is used to pay for the certificates that buy new glasses for people who need them in the United States.

Glasses may be mailed to: NEW EYES FOR THE NEEDY, 549 Millburn Ave., Short Hills, NJ 07078. Phone: (973) 376-4903. Many other community organizations maintain drop boxes at supermarkets and community centers.

WIRELESS PHONES

The DONATE A PHONE® CALL TO PROTECT® campaign collects wireless phones to benefit victims of domestic violence. Proceeds from the sale of phones help fund agencies that fight domestic violence and are also used to support the educational efforts of the Wireless Foundation. Other phones are refurbished and become lifelines for domestic violence victims when faced with an emergency situation. Check the following web sites:

www.wirelessfoundation.org • www.donateaphone.com

www.collectivegood.com • www.call2recycle.org

Propane Disposal

Propane tanks without OPD (Overfill Protection Devices) valves are no longer permitted to be refilled. Residents of Somerset County may bring old propane tanks used for barbecues to any Household Hazardous Waste Drop-off Day collection event for free disposal. In addition, the following companies will also accept old propane tanks; however they may charge a fee. Call the company of your choice for more information.

Agway Garden Center

Thompson Avenue
Raritan
908-725-9252
Refills & Accepts Empties

Farmers Co-op

100 Township Line Road
Belle Mead
732-873-1145
No Fee, Empties Only

Klein Scrap Metal

2156 Camplain Road
Hillsborough
908-722-2288
No Fee, Empties Only

Synergy Gas

4700 S. Clinton Ave.
South Plainfield
908-755-5100
Fee, Empty or Filled

Home Depot

Propane Exchange Programs

Bring your old tank in, ask for a new, filled tank!

Bridgewater (Rt. 28) • 732-469-5883

Watchung (Rt. 22) • 908-222-7700

Raritan Twp. (Rt. 202 Flem.) • 908-782-2577

Union • 908-686-9804

South Plainfield • 732-752-5900

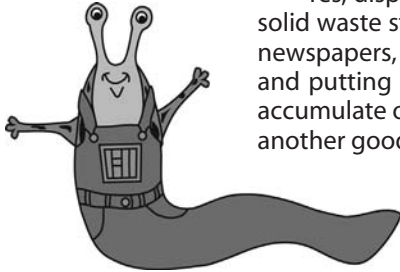


BACKYARD COMPOSTING & CUT IT & LEAVE IT

Reduce Waste & Improve Your Soil...Come to a Workshop for Somerset County Residents

Are Grass Clippings Really that Much of a Disposal Problem?

Yes, disposing of grass clippings is very costly and wasteful. Grass clippings are a major part of New Jersey's municipal solid waste stream. As New Jersey residents, we are already helping to reduce the amount of waste we generate by recycling newspapers, plastics, glass, cans and more. We can do more by not collecting grass clippings each time we mow our lawn and putting the clippings curbside. We will save our towns time and money while doing it! Excessive clippings that may accumulate on the lawn in the spring and fall can be avoided by cutting the lawn more frequently. Using a mulching mower is another good strategy to return grass clippings to the lawn.



2009 COMPOSTING WORKSHOPS

May 12 & September 15

10:00 - 11:30AM & 6:30 - 8:00PM • 4-H Center, 310 Milltown Road, Bridgewater

Call 908-231-7031 to register.

Benefits of Composting

Environmentally Friendly Thing to Do

Composting kitchen and yard debris can divert from landfills over 30 percent of the average residential waste. If everyone had their own compost heap or bin, we could reduce landfill use, avoid burying nutrients and trace minerals and creating methane gases. Composting saves you money by reducing the volume of trash transported and disposed of in landfills and by providing a FREE, nutrient-rich soil additive. Composting recycles nutrients and organic matter back into the soil. Compost improves soil moisture and decreases erosion, while feeding vegetable and flower gardens.

Benefits of Grasscycling

Grasscycling your lawn clippings with any mower saves time and money. No bags to fill up or empty...a ton of grass clippings costs from \$65 to \$100 for disposal...and reduces fertilizer use and increases organic matter to promote healthier soil and plants.

REDUCE, REUSE and then RECYCLE

If we all first reduce the amount of waste that we generate, and reuse items whenever possible, we will save money, energy and resources for our future generations.

Here are some ideas to help you REDUCE & REUSE:

- **Go to www.freecycle.org and visit the Somerset group. The Freecycle Network is a grassroots movement open to all communities including non-profit organizations and to all individuals who want to participate.** When you want to find a new home for something...whether it's a fax machine, a chair, piano or old door...you simply send an e-mail offering it to members of your local Freecycle group. Everything posted must be free, legal and appropriate for all ages.
- **Visit www.throwplace.com, an online market where individuals, non-profit organizations and businesses can exchange goods and surplus inventory free of charge.**
- **Write to the Mail Preference Service to request your name not be sold on mailing lists so that you receive less junk mail:** Mail Preference Service c/o Direct Marketing Association, PO Box 643, Carmel, NY 15012-0634 (include all variations of your name as well as street address, city, state, zip code and signature-results could take 3-6 months); and call or write Trans Union at 1-888-567-8688 or Trans Union LLC's Name Removal Option, PO Box 97328, Jackson, MS 39288-7328.



The Wonderful World of Composting

Let's get ready to compost!

Composting breaks down plant materials into tiny pieces, to be recycled into new plants & animals. The breakdown is carried out by micro-organisms & soil animals through decomposition.

Nature has been recycling for a long time, so that nothing gets wasted. Composting your food scraps, fallen leaves, & yard waste makes sense.

COMPOSTING SAVES YOU MONEY:

- By reducing the volume of trash transported & disposed of in landfills.
- By providing a FREE, nutrient rich soil additive.

COMPOSTING IS GOOD FOR YOU & THE ENVIRONMENT:

- Composting recycles nutrients & organic material back into the soil.
- Compost improves soil moisture, decreases erosion, while feeding vegetable & flower gardens.

IT'S THE ENVIRONMENTAL THING TO DO!

Composting is a great way to transform your endless supply of kitchen & yard wastes into a valued product.

Putting Compost To Use

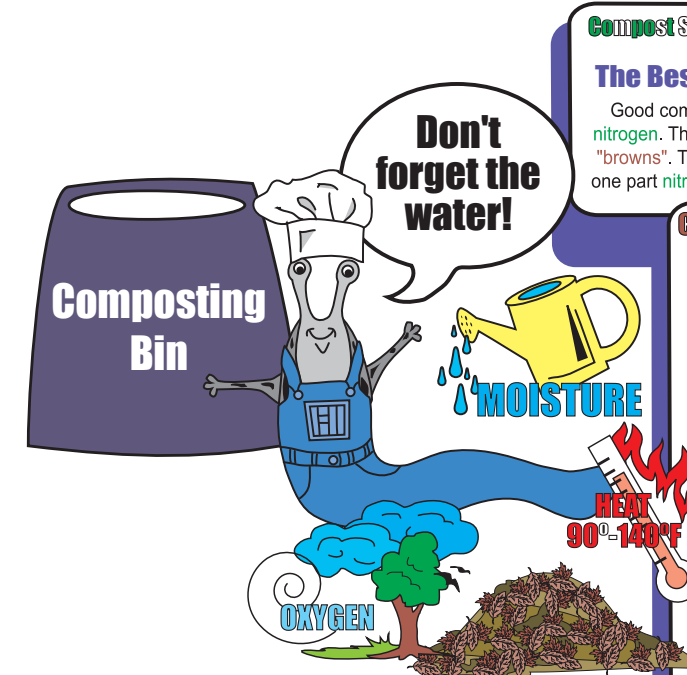
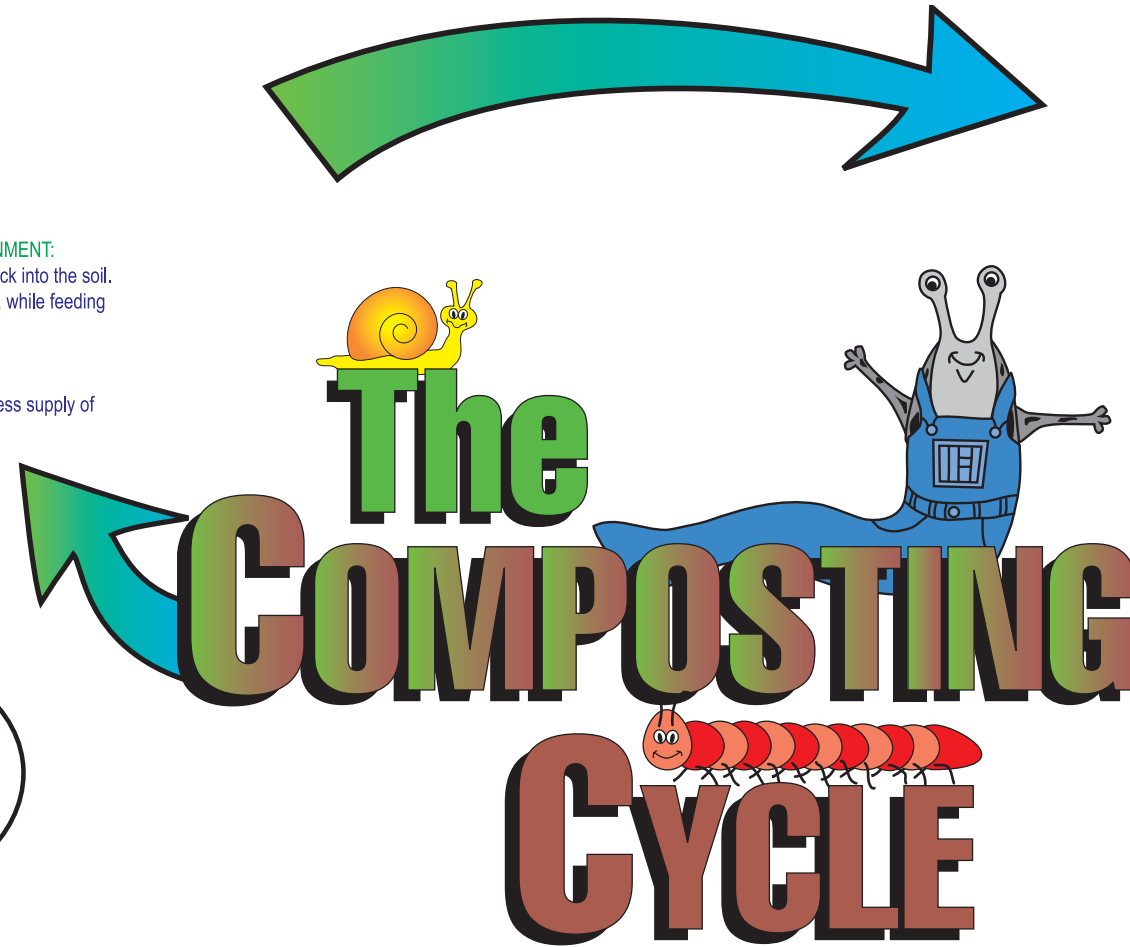
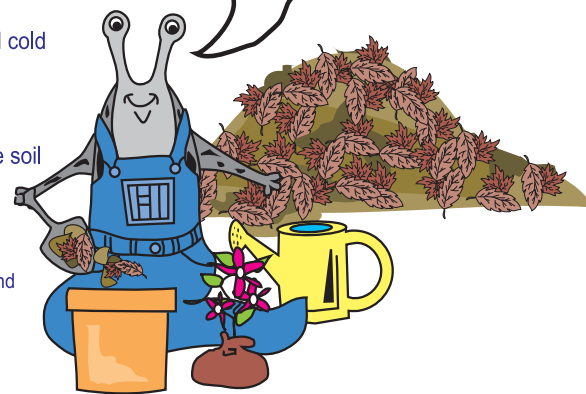
Your compost is cooked and ready to use when:

- The heap is 1/2 its original size
- The temperature inside the pile drops below 90°F
- It is dark and crumbly like potting soil
- Smells earthy like the woods after a rainstorm

- Insulates plant roots from extremes of hot and cold
- Traps moisture in the soil, for roots to drink
- Stops the soil surface from drying out
- Prevents weeds from growing
- Recycles much needed nutrients back into the soil
- Slows erosion

- Add compost around flower beds, in vegetable gardens, in and around shrubs and trees.
- Dig compost into your dirt to break up heavy clay soils and retain water in sandy soils.
- Add a handful of compost the next time you repot your house plants to help them grow up big and strong.

This is one way to use compost!



Compost Stew

The Best Ever - Compost Recipe

Good compost piles contain materials high in nitrogen. The "greens" & those high in carbon the "browns". The pile should be two parts carbon to one part nitrogen to obtain the fastest breakdown.

COMPOST

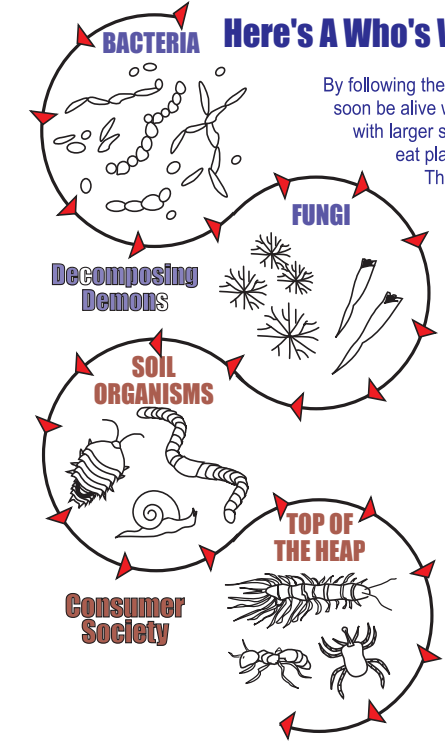
Follow this recipe for a rich crumbly compost:

MATERIALS NEEDED:
3'x3' Area
A large composting bin with ventilation holes
A rake or other tool to stir pile
Starter Mix: garden soil & humus (high in micro-organisms to help begin the decomposing cycle)

INGREDIENTS:
Greens (moist & high in nitrogen), yard waste, vegetable & fruit peelings, egg shells, grass (in small amounts, or better still, after mowing leave clippings to decompose on the lawn)
Browns (dry & high in carbon) dried leaves, dried plant parts, sawdust, shredded newspaper, twigs & branches (mulched or chipped to 1")

PROCEDURE:
Chop ingredients to less than 2", stir browns, greens, & starter mix thoroughly.
Add small quantities of water until mixture is moist.
"Cook" between 90° - 140°F (placing composter in sunny location helps)
Spread on garden when done. May take 6 weeks to 6 months.
LEAVE IT OUT!
Meat, fish, bones, dairy products, fatty foods, bread & animal feces will produce nasty smells & attract pest animals.

Here's A Who's Who of the Heap!



By following the above composting recipe your composting heap will soon be alive with activity. Micro-organisms such as bacteria & fungi, along with larger soil invertebrates such as earthworms, millipedes, sowbugs, eat plant material, breaking it down into tiny fragments over time. These creatures then become food for larger soil macro-organisms, such as beetles & centipedes who patrol at the top of the compost pile.

DECOMPOSING DEMONS:

- Bacteria** - The billions & billions of bacteria in the compost pile help digest the plant's tiny molecules into even smaller bits & pieces. A by-product of this breakdown is heat, allowing the bacteria to work even faster.
- Fungi** - Minute organisms which secrete enzymes to break down tough fibrous materials such as husks, twigs & nut shells.

CONSUMER SOCIETY:

- Soil Organisms** - Larger soil invertebrates such as worms, snails, & sowbugs eat plant material directly & are known as primary consumers. Their droppings are full of tiny plant pieces, increasing surface area for the bacteria to decompose.
- Top of the Heap** - At the top of the compost pile food chain are the secondary consumers including ground beetles, centipedes, psuedo scorpions & ants which feed on the primary consumers.



COUNTY ROADS CLEANER Litter Affects Everyone

Litter is unhealthy, unsightly and can be a safety hazard. We can help stop litter by making sure that garbage isn't overflowing and that there are enough garbage receptacles where they are needed, but the attitude that causes people to litter must be changed. People tend to think that somebody else will clean it up, especially in places where there already is a lot of litter or places where the sense of community pride is low. **Take responsibility for your actions and pride in your environment - don't litter! And remember, littering is against the law.**

"The total amount of litter removed from county roads during 2008 was 38,712 pounds or more than 19 tons," Freeholder Robert Zaborowski, liaison to the solid waste program, reported. The program was funded by a \$46,874 grant from New Jersey Clean Communities Program and benefited the Somerset County Road Division, which was able to hire summer help and the Solid Waste Management Division, which organized Adopt-A-Road groups and community service workers.

This year, the Somerset County Clean Communities program joined forces with the Somerset County Probation Department for the eleventh year to assist with the litter abatement project. The joint venture allowed individuals sentenced to community service the opportunity to contribute positively to the community and provided the court an additional sentencing alternative. Community service participants picked up 7,400 pounds of litter on county roadways from May through October.

The Somerset County Road Division removed another 24,587 pounds of litter and recovered an additional 9,337 pounds of marketable recyclables from county roads that they cleaned.

Thirty-nine organizations participated in the county Adopt-A-Road program in 2008, greatly contributed to the clean-up effort by removing and properly disposing of 6,725 pounds of litter during the spring, summer, and fall.

TIRE STORAGE AND THE WEST NILE VIRUS

What does the proper storage and recycling of tires have to do with the West Nile Virus? Tires stored outdoors can collect water and provide an ideal breeding site for mosquitoes, including the *Culex pipiens* species, the primary transmitter of the West Nile Virus.

What should I do to help prevent the West Nile Virus? Store tires indoors or in a covered container. Tires must be stored in totally enclosed structures, closed trailers or covered roll-off containers. This requirement is enforceable by the County Health Department.

Properly dispose of/recycle your tires. County residents can utilize the county's First Saturday of the Month drop-off for tire recycling. Somerset County will accept & recycle a maximum of eight (8) tires at one time. Location/times: Somerset County Recycling Center, 40 Polhemus Lane, Bridgewater, 8am - 2pm.

Empty any objects on your property filled with standing water. Any container or bucket that is susceptible to collecting water can also become a breeding ground for mosquitoes. These items should be removed, covered or emptied after each rain event.

Report illegally dumped tires. If you see a pile of illegally dumped tires, please report it to your local municipality or to the Somerset County Health Department at 908-231-7155.

**Additional Tire Drop-offs have been scheduled for county residents and farmers.
A maximum of eight (8) tires per resident will be accepted at the following locations:**

May 18 - 22, 2009
Mon. thru Fri. • 8am - 3pm
Peapack Garage
5 Holland Avenue, Peapack

September 16 - 19, 2009
Wed. thru Fri. • 8am - 3pm
Saturday • 8am - Noon
Manville Public Works Department
10 Gladys Avenue, Manville

November 16 - 20, 2009
Mon. thru Fri. • 8am - 3pm
South County Public Works Garage
410 Roycefield Road, Hillsborough

What is Non-point Source Pollution?

Non-point source pollution, or people pollution, is a contamination of our groundwater, waterways and ocean that results from everyday activities such as fertilizing the lawn, walking pets, changing motor oil and littering. With each rainfall, pollutants generated by these activities are washed into storm drains that flow into our waterways and ocean. They also can soak into the ground, contaminating the groundwater below.

Each one of us, whether we know it or not, contributes to non-point source pollution through our daily activities. As a result, non-point source pollution is the BIGGEST threat to many of our ponds, creeks, lakes, wells, streams, rivers and bays, our groundwater and the ocean.

The collective impact of non-point source pollution threatens aquatic and marine life, recreational water activities, the fishing industry, tourism and our precious drinking-water resources. Ultimately, the cost becomes the burden of every New Jersey resident.

But there's good news - in our everyday activities we can stop non-point source pollution and keep our environment clean. Simple changes in YOUR daily lifestyle can make a tremendous difference in the quality of New Jersey's water resources. Here are just a few ways you can reduce non-point source pollution.



LITTER

Place litter, including cigarette butts and fast-food containers, in trash receptacles. Never throw litter in streets or down storm drains. Recycle as much as possible.



CAR WASHING SOAP

Wash your car only when necessary. Consider using a commercial car wash that recycles its wash water. Like fertilizers, many car detergents contain phosphate. If you wash your car at home, use a **non-phosphate detergent**.



BOAT DISCHARGES

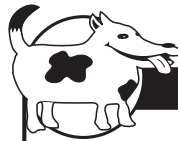
Dumping boat sewage overboard introduces bacteria and viruses into the water. Boat owners should always use marine sanitation devices and pump-out facilities at marinas.



FERTILIZER & PESTICIDES

Fertilizers contain nitrates and phosphates that, in abundance, cause blooms of algae that can lead to fish kills. Avoid the overuse of fertilizers and do not apply them before a heavy rainfall.

PESTICIDES: Many household products made to exterminate pests also are toxic to humans, animals, aquatic organisms and plants. Use alternatives whenever possible. If you do use a pesticide, follow the label directions carefully.



PET WASTE

Animal wastes contain bacteria and viruses that can contaminate shellfish and cause the closing of bathing beaches. Pet owners should use newspaper, bags or scoopers to pick up after pets and dispose of wastes in the garbage or toilet.



HOUSEHOLD HAZARDOUS PRODUCTS

Many common household products (paint thinners, moth balls, drain and oven cleaners, to name a few) contain toxic ingredients. When improperly used or discarded, these products are a threat to public health and the environment. Do not discard with the regular household trash. Use natural and less-toxic alternatives whenever possible. Contact the Somerset County Solid Waste Management Office for information regarding household hazardous waste collections; call 908-231-7031 for a printed list of household cleaning alternatives.



SEPTIC SYSTEMS

An improperly working septic system can contaminate ground water and create public health problems. Avoid adding unnecessary grease, household hazardous products and solids to your septic system. Inspect your tank annually and pump it out every three to five years depending on its use.



MOTOR OIL

Used motor oil contains toxic chemicals that are harmful to animals, humans and fish. Do not dump used motor oil down storm drains or on the ground. Recycle all used motor oil by taking it to a local public or private recycling center.



YARD WASTE

Compost yard waste (leaves, grass, etc.). Don't blow waste into the street or storm drains.



Commercially Generated Electronics & Fluorescent Bulbs

Certain consumer electronics and fluorescent bulbs contain heavy metals, mercury and others materials that are considered hazardous. These items must be properly disposed of according to Hazardous Waste or Universal Waste regulations.

Newtech Recycling, Inc.

600 Apgar Drive, Suite A
Somerset, NJ 08873
(732) 469-9774
www.newtechrecycling.com
computers

Hesstech, LLC

45 Executive Drive
Edison, NJ 08817
(800) 958-1404
www.hesstech.com
computers & bulbs

AERC

2591 Mitchell Ave.
Allentown, PA
(610) 797-7608
www.arecrecycling.com
computers & bulbs

Veolia Env. Services

1453 Pinewood Street
Rahway, NJ 07065
(800) 478-6055
computers & bulbs

Bethlehem Lamp Recycling

935 Bethlehem Drive
Bethlehem, PA 18017
(610) 838-7034
www.bethlehemlamprecycling.com
bulbs

Clean Harbors Env. Services

41 Tomkins Point Road
Newark, NJ
(973) 643-6025
www.cleanharbors.com
bulbs

LampTracker

Online at: www.WMLamptracker.com or call (800) 664-1434
bulbs

The NJDEP maintains a list of approved facilities. Contact NJDEP at (609) 984-6650 or visit their website at www.state.nj.us/dep/dshw/lrm/uwrcompu.htm for names of additional approved facilities. Please call ahead for a list of acceptable and unacceptable items as well as pricing. You can learn more about diverting hazardous materials from the waste stream by visiting the Rutgers Solid Waste Policy Group website at <http://aesop.rutgers.edu/~wastemgmt/>.

NOTE: Somerset County has adopted amendments to the solid waste management plan that require commercial, retail, wholesale, restaurants, taverns, schools, institutions, warehouses, construction sites, factories and office buildings to recycle Mercury-Containing Devices and Used Consumer Electronics. These mandates became effective following NJDEP's approval of Somerset County's Plan on May 23, 2007.



A RECYCLING GUIDE FOR SOMERSET COUNTY BUSINESSES, INSTITUTIONS & INDUSTRIES

On April 20, 1987, Governor Thomas Kean signed the Mandatory Source Separation and Recycling Act. This law requires everyone to separate recyclable materials from regular trash. Each municipality was obligated to recycle 25% of its solid waste.

In November of 1990, Governor James Florio accepted a report by the NJ Solid Waste Task Force, which called for a goal of 60% to be recycled by 1995.

Residential recycling programs have been effective in helping Somerset County work toward achieving a 60% goal, but our residents cannot do it alone. Businesses and institutions need to recycle too.

YOUR RESPONSIBILITY

As the owner, operator or manager of a business/commercial establishment you must ensure that a recycling system is in place. That system needs to provide for the separation of mandatory recyclable trash and for the proper recycling of those materials. You, not your trash hauler, are responsible for separating mandatory materials and keeping them out of any refuse containers holding non-recyclable trash.

If you are a property owner and relying on your tenant to manage recycling, this agreement should be in writing.

If you are a tenant and relying on your landlord to manage recycling, this agreement should also be in writing.

WHY RECYCLE?

- **It Saves Natural Resources.** By making products from recycled materials instead of virgin materials, we conserve natural resources.
- **It Saves Energy.** It usually takes less energy to make recycled products. Recycled aluminum, for example, takes 95% less energy than making new aluminum from bauxite ore.
- **It Protects and Preserves Our Clean Air and Water.** In most cases, making products from recycled material creates less air and water pollution than making products from virgin materials.
- **Disposal Costs.** Your disposal costs may be stabilized or reduced by decreasing the amount of trash sent for disposal.
- **Disposal Capacity.** Recycled materials don't go into landfills or incinerators.
- **Profit.** Your business may profit from selling recyclables.
- **It's the Law.** The Somerset County Solid Waste Management Plan requires that certain materials be kept separate from garbage in order to be recycled.

To comply with State, County and local laws, businesses, institutions, government and commercial establishments are required to separate the following materials that are generated at your location(s):

**Aluminum Cans • Antifreeze • Computer Printout/White Ledger
Concrete • Consumer Batteries • Corrugated Cardboard
Glass Containers • Heavy Iron • Lead-Acid Batteries
Leaves & Brush • Magazines & Junk Mail**

Mercury Containing Devices - *Thermometers, Fluorescent Tubes, CFL's*
Mixed Office Paper • Newspaper • Plastic Containers & Bottles
Scrap Autos • Steel Cans • Stumps, Logs and Tree Parts • Textiles
Used Consumer Electronics - *Any appliance used in a business that includes circuitry, components and subassemblies of the electronic products. Examples include computers & peripherals, printers, copiers, VCRs, televisions, cell phones and fax machines, etc.*

Used Motor Oil • White Goods & Light Iron • Wood Scrap

RECOMMENDED ACTIONS

FIRST STEP:

1. Contact your trash hauler for recycling information and associated costs.
2. If needed, contact your Municipal Recycling Coordinator for assistance in setting up a recycling system.
3. Establish recycling policies at your business/commercial establishment.
4. Educate your employees and your customers on how they should participate (create posters, memos, etc.).

STORAGE

Recyclables should be temporarily stored in a **clearly marked container**. Each container should be large enough to hold the material you generate without overflow and must be free of non-recyclable trash.

PENALTIES Violations of the recycling requirements may result in fines. **Recycling in the State of New Jersey is mandatory.** Businesses, institutions and industries that are not in compliance with the regulations can be assessed monetary penalties, starting at \$1,000, for each day a violation continues. The scale of fines is established pursuant to the New Jersey Solid Waste Management Act.

Avoid these fines by properly establishing a recycling program for your business or commercial establishment. Proper recycling requires some effort on your part, but the results will benefit you, your community and our environment.

COLLECTION A solid waste hauler and a recycling collection firm may collect your recyclables where available. If you generate a significant amount of recyclables, you should investigate marketing your materials directly in order to minimize costs and maximize revenue from the sale of materials.



If you are interested in our recycling program, but are unable to visit us at our Recycling Center, we will visit your classroom or organization. The history of Somerset County's Recycling Program will be explained. Samples of items made from recyclable materials are also available.

To arrange for the County's Recycling Coordinator to visit your site, please call 908-231-7109.

Recycling Tours

Trash does not just disappear! The Recycling Center tour helps students understand the need to reduce solid waste flow, to close the recycling loop, and to keep the environment healthy.

A conference room with a large window overlooking the tipping floor gives students the opportunity to view Somerset County workers and machinery sorting and preparing recyclable material for delivery to markets. They will learn where recyclables go and how they are made into new products. Samples of products made from recyclables will be on display.

The implementation of the four R's (Reduce, Reuse, Recycle and Rot), combined with a knowledge of recycling technology, will enable students to make positive changes to benefit the environment.

The tour takes 45 minutes to one hour and includes a video presentation. Please dress accordingly as a portion of the tour is outdoors. No sandals or open-toed shoes!

How to Schedule a Tour

Tours are free and can be arranged based on your needs and time requirements. To make your tour most effective, we accept groups of 25 or less.

The Somerset County Division of Solid Waste Management also has the following educational resources available for loan:

- Environmental educational videos
- Environmental books
- Information on most environmental subjects

To schedule a tour, please call 908-231-7109. When you call, please be prepared to provide the following information:

- Date and time
- Number of students
- Group or school
- Grade level
- Contact person and phone number

17 Schools Receive Environmental Grants in 2008

If your group were chosen to receive up to \$1,000 for an activity related to the environment, how would the money be spent?

In an effort to increase environmental education and awareness, the Somerset County Board of Chosen Freeholders and Division of Solid Waste Management annually award grants to schools that answer that question.

"Students have always been our best promoters of recycling and environmental awareness," said Freeholder Robert Zaborowski, liaison to the county solid waste and recycling programs. "This is the perfect opportunity to once again encourage this partnership between education and the environment."

The grant awards are presented to school representatives at a freeholder meeting. All entries are reviewed and evaluated by the Division of Solid Waste Management staff. A total of \$16,453.20 in grants funds was awarded in 2008. The funds are part of an allocation from the New Jersey Department of Environmental Protection for recycling education.

For more information, call 908-231-7109 or e-mail the division at solidwaste@co.somerset.nj.us.

Congratulations

2008 Environmental Contest Winners

Allies; Bedminster Township School District; Bridgewater Adamsville School, Bridgewater Raritan HS Robotics Team; Franklin Township Bunker Hill Environmental Ed. Center and MacAfee Road School; Raritan Valley Community College Environmental Club; Green Brook Middle School and Irene E. Feldkircher School; Hillsborough Middle School; Oak Street School, Basking Ridge; John F. Kennedy School, Raritan; North Plainfield High School Hope Club; Mt. Saint Mary Academy, Watchung; Old York School, Branchburg; Van Derveer School, Somerville; Warren Township Elementary Schools

Household Hazardous Waste Days

Six Household Hazardous Waste Drop-offs
9 AM - 2 PM

• **March 28, 2009**
Bernards Township
Public Works Garage
277 South Maple Avenue
Basking Ridge, NJ 07920

• **May 9, 2009**
Warren Township
Public Works Garage
1 Bardy Road
Warren, NJ 07059

• **June 13, 2009**
South County
Public Works Garage
410 Roycefield Road
Hillsborough, NJ 08844

• **August 1, 2009**
Franklin Township
Sewerage Authority
70 Commerce Drive
Somerset, NJ 08873

• **September 12, 2009**
Branchburg Township
Public Works Garage
34 Kenbury Road
Branchburg, NJ 08876

• **October 24, 2009**
South County
Public Works Garage
410 Roycefield Road
Hillsborough, NJ 08844

Who CAN Participate?

All Somerset County homeowners and farmers.

Please note that materials accepted at Household Hazardous Waste Days are NOT the same as those accepted at 1st Saturday of the Month Drop-Off Days (see page 2).

What CANNOT be collected?

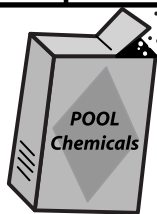
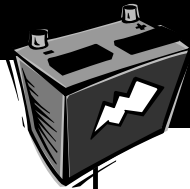
- Unknown or unidentified material
- Pentachlorophenol
- 2, 4, 5-TP (Silvex)
- Gas cylinders
- Infectious waste
- Latex paint*
- Air conditioners/dehumidifiers
- Smoke Detectors
- Electronic waste
- Explosives
- Dioxins
- PCBs
- Tires

For more information on H H W Days & locations call 908-231-7031

What CAN be collected?

- All hazardous waste generated from households along with banned or outdated pesticides
- Wastes only in their original, labeled containers
- Auto products: Anti-freeze, transmission fluids, brake fluids, wet-cell car batteries, motor oil (2 gallon maximum) & used oil filters
- Fluorescent tubes & Compact fluorescent lights
- Ammonia-based cleaners
- Gasoline
- Kerosene
- Mercury switches
- Mercury
- Oil-based paints*
- Pool chemicals
- Propane tanks

*Latex or water-based paints may be air-dried or diluted with water, and the cans may then be thrown in the regular trash.



1st Saturday of the Month Drop-off Days

Somerset County Recycling Center

40 Polhemus Lane, Bridgewater

Open the first Saturday of each month from 8 am to 2 pm.

For information call the Recycling Center at 732-469-3363.

Items to bring to the Recycling Center include the following:

ACCEPTABLE RECYCLABLES

Newspaper • Magazines • Junk mail & other paper • Shredded paper
Corrugated cardboard • Household batteries • Phone books
Glass bottles (#1 & #2) • Microwave ovens
Aluminum, steel & bi-metal cans • Textiles • Antifreeze
Scrap metal • Used motor oil & oil filters • Passenger tires**
Chipboard: Boxes; cereal, cookie, pasta, cake, cracker, detergent (Remove plastic liners),
gift, shoe, shirt or any retail boxes. Poster board & backing on writing pads.

Food Bank Donations

Accepted at
1st Saturday
Drop-offs

Canned Goods &
Non-Perishables
ONLY

ACCEPTABLE CONSUMER ELECTRONICS

Computers (CPUs) • Servers • Monitors/Terminals/CRTs • Televisions
Printers • Fax Machines • Copiers • Computer/Laptop Peripherals
Telecommunication Equipment (Telephones, Cellular Phones, Telephone Mainframes)
Keyboards/Mice • Cables • Wiring • Circuit Boards • Modems
Power Supplies • Laptops & Docking Stations • Audio Visual Equipment
Typewriters • VCRs • Mainframe Equipment & Controllers • Camcorders
CDs • DVDs • Computer Disks • Diskettes • Videotapes • Cassette Tapes

January 10, 2009*

February 7, 2009

March 7, 2009

April 4, 2009

May 2, 2009

June 6, 2009

July 11, 2009*

August 1, 2009

September 12, 2009*

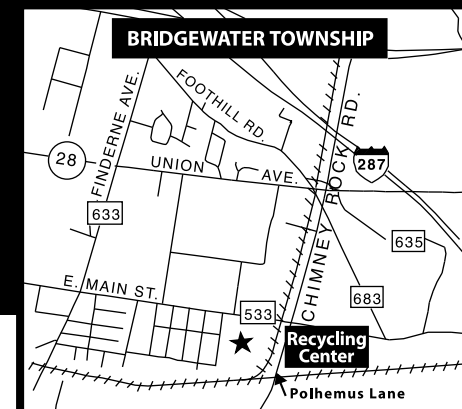
October 3, 2009

November 7, 2009

December 5, 2009

*Second Saturday of the month due to holiday.

**Limit of 8 tires with or without rims.



2009 Somerset County Recycling Schedule



IMPORTANT! Please place materials at curbside either the night before or no later than 7 a.m. on your collection day. For more information on curbside collection call the **Recycling Center at 732-469-3363**.

BRANCHBURG & RARITAN			
January	12, 26	July	13, 27
February	9, 23	August	10, 24
March	9, 23	Sept.	8, 21
April	6, 20	Oct.	5, 19
May	4, 18	Nov.	2, 16, 30
June	1, 15, 29	Dec.	14, 28

HILLSBOROUGH & MILLSTONE			
January	13, 27	July	14, 28
February	10, 24	August	11, 25
March	10, 24	Sept.	8, 22
April	7, 21	Oct.	6, 20
May	5, 19	Nov.	3, 17
June	2, 16, 30	Dec.	1, 15, 29

BOUND BROOK, MANVILLE & SOMERVILLE			
January	14, 28	July	1, 15, 29
February	11, 25	August	12, 26
March	11, 25	Sept.	9, 23
April	8, 22	Oct.	7, 21
May	6, 20	Nov.	4, 18
June	3, 17	Dec.	2, 16, 30

FRANKLIN TWP. & SO. BOUND BROOK			
January	2, 15, 29	July	2, 16, 30
February	12, 26	August	13, 27
March	12, 26	Sept.	10, 24
April	9, 23	Oct.	8, 22
May	7, 21	Nov.	5, 19
June	4, 18	Dec.	3, 17, 31

FRANKLIN PARK - GRIGGSTOWN			
January	2, 16, 30	July	6, 17, 31
February	13, 27	August	14, 28
March	13, 27	Sept.	11, 25
April	10, 24	Oct.	9, 23
May	8, 22	Nov.	6, 20
June	5, 19	Dec.	4, 18

MONTGOMERY & ROCKY HILL			
January	2, 16, 30	July	6, 17, 31
February	13, 27	August	14, 28
March	13, 27	Sept.	11, 25
April	10, 24	Oct.	9, 23
May	8, 22	Nov.	6, 20
June	5, 19	Dec.	4, 18

BERNARDS TWP.			
January	5, 20	July	6, 20
February	2, 17	August	3, 17, 31
March	2, 16, 30	Sept.	14, 28
April	13, 27	Oct.	12, 26
May	11, 26	Nov.	9, 23
June	8, 22	Dec.	7, 21

BEDMINSTER, BERNARDSVILLE, PEAPACK-GLADSTONE & FAR HILLS			
January	6, 20	July	7, 21
February	3, 17	August	4, 18
March	3, 17, 31	Sept.	1, 15, 29
April	14, 28	Oct.	13, 27
May	12, 26	Nov.	10, 24
June	9, 23	Dec.	8, 22

BRIDGEWATER			
January	7, 21	July	8, 22
February	4, 18	August	5, 19
March	4, 18	Sept.	2, 16, 30
April	1, 15, 29	Oct.	14, 28
May	13, 27	Nov.	12, 25
June	10, 24	Dec.	9, 23

MARTINSVILLE - THOMAE PARK			
January	8, 22	July	9, 23
February	5, 19	August	6, 20
March	5, 19	Sept.	3, 17
April	2, 16, 30	Oct.	1, 15, 29
May	14, 28	Nov.	12, 27
June	11, 25	Dec.	10, 24

WARREN & WATCHUNG			
January	8, 22	July	9, 23
February	5, 19	August	6, 20
March	5, 19	Sept.	3, 17
April	2, 16, 30	Oct.	1, 15, 29
May	14, 28	Nov.	12, 27
June	11, 25	Dec.	10, 24

NORTH PLAINFIELD & GREEN BROOK			
January	9, 23	July	10, 24
February	6, 20	August	7, 21
March	6, 20	Sept.	4, 18
April	3, 17	Oct.	2, 16, 30
May	1, 15, 29	Nov.	13, 27
June	12, 26	Dec.	11, 28

In case of inclement weather, recycling pickups may be CANCELLED. The next collection will be two weeks later on your regularly scheduled day. For weather information, tune in to radio stations WCTC (1450 AM), WMGQ (98.3 FM), WMTR (1250 AM), WHWH (1350 AM), WPST (94.5 FM) or NEW JERSEY 101.5 FM. Holidays that will affect recycling collection in 2009 are as follows: New Years Day (Jan. 1); Martin Luther King's Birthday (Jan. 19); Presidents' Day (Feb. 16); Memorial Day (May 25); Independence Day (July 3); Labor Day (Sept. 7); Veterans Day (Nov. 11); Thanksgiving Day (Nov. 26); and Christmas Day (Dec. 25). If your usual pickup day falls on one of these holidays, your collection has been rescheduled to the following weekday.

SOMERSET COUNTY



TALKING TRASH

MUNICIPAL RECYCLING COORDINATORS

Somerset County Recycling does not collect the following: furniture, carpeting, appliances, mattresses, & brush and leaves. Please contact your Municipal Department of Public Works for permits, stickers and/or scheduling of pick-ups:

Bedminster
SEAN McCARTHY

908-212-7015 • smccarthy@bedminster.us

Bernards
MIKE MULLIGAN

908-204-3084 • mmulligan@bernards.org

Bernardsville
ALLAN ROME

908-766-3000 ext. 110
Bulky Waste: 908-766-3000 ext. 147

Bound Brook
TOM MILLER

732-356-0833 • cindy@boundbrook-nj.com

Branchburg
TOM MANTZ

908-526-1300 ext. 103
tom.mantz@branchburg.nj.us
Bulky Waste: 908-526-1300 ext. 180

Bridgewater
JOHN FALCONE

908-725-6300 ext. 258
environmental2@bridgewater.nj.gov
Bulky Waste: 732-469-0551 ext. 221

Far Hills
COUNCILWOMAN SHEILA TWEEDIE
908-234-0611 • FoxxRidge@aol.com

Franklin
VICTOR STEVENS

732-873-2500 ext. 290
victor.stevens@twp.franklin.nj.us

Green Brook
KELLY CUPIT

732-968-1023 ext. 6602
kcupit@greenbrooktwp.org

Hillsborough
GLEN BELNAY

908-369-4313 • gbelnay@hillsborough-nj.org
Annual Clean-up: 908-369-3950

Manville
PHIL PETRONE

908-725-5512 • ppetrone@manvillenj.org

Millstone
WILLIAM POCH
908-359-8038

Montgomery
ART VILLIANO

908-874-3144
avilliano@twp.montgomery.nj.us

North Plainfield
CINDY DANOIS

908-769-2907
cdanois@npsmail.org
Bulk Waste: 908-769-2914

Peapack-Gladstone
DONNA BASSMAN

908-234-1259
dbassman28@comcast.net

Raritan
DANIEL JAXEL

908-231-1300 ext. 15 • djaxel@raritan-nj.org

Rocky Hill
RAYMOND E. WHITLOCK, JR.
609-924-7445 (Wed. 3-6)
clerk@rockyhill-nj.gov

Somerville
PETER HENDERSHOT

908-704-7195
phendershot@somervillenj.org

South Bound Brook
KEN PINE

732-356-0258 ext. 16
kpine@southboundbrook.com

Warren
DOUG BURO

908-753-5149 • dburo@warrentboe.org

Watchung
MARYANN HANCE
908-756-0080 • mhance@watchungnj.com
Public Works: 908-753-6115

NEED COUNTY RECYCLING INFORMATION FAST?

Call Somerset County Solid Waste Info Line: 908-231-7031

24 hours, 7 days a week, recorded messages, or check out our Web site: www.co.somerset.nj.us

Sponsored by the Somerset County Board of Chosen Freeholders

Rick Fontana, Director • Jack M. Ciattarelli, Deputy Director • Peter S. Palmer • Robert Zaborowski • Patricia L. Walsh

Printed on Recycled Newsprint