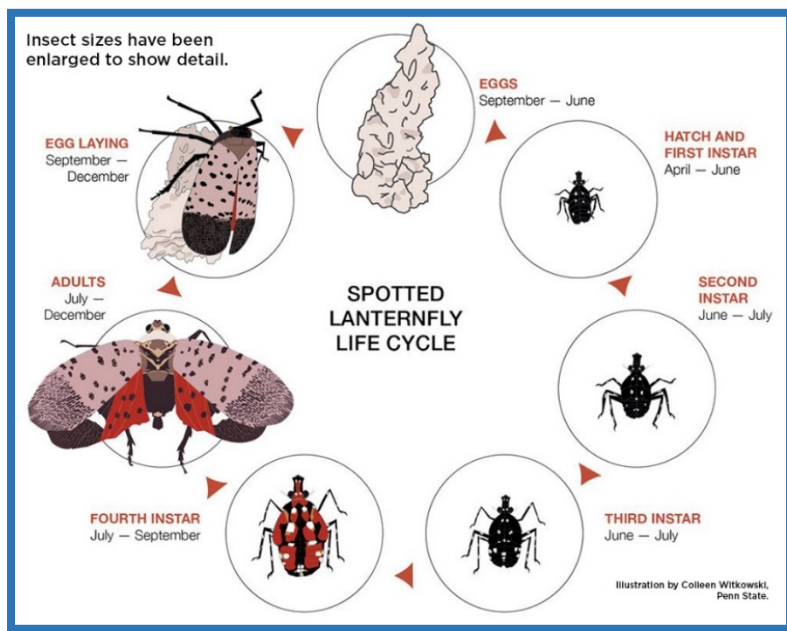


SPOTTED LANTERNFLY: **WHAT IS IT, WHY DOES IT AFFECT** **ALL NEW JERSEY RESIDENTS,** **AND** **WHAT TO DO IF YOU SPOT IT**

The Spotted Lanternfly is an invasive planthopper native to Asia that is causing serious damage to crops, plants and trees, and poses a threat to outdoor living and recreation for all New Jersey residents. Known as an excellent hitchhiker, the Spotted Lanternfly moves from place to place by transporting itself in clothing, on vehicles and by laying its egg masses on most common surfaces.



*If you travel to a County under quarantine for the Spotted Lanternfly, check your clothing, vehicles, and items transported

For more information, please visit:

<https://www.nj.gov/agriculture/divisions/pi/prog/spottedlanternfly.html>

<https://njaes.rutgers.edu/spotted-lanternfly/>

https://youtube.com/watch?v=WoFp_MbDiE8

What to do if you find a Spotted Lanternfly at any life stage:

1. Collect a Specimen – scrape the egg masses off the surface, double bag it and throw it away. Egg masses can also be placed in alcohol, bleach or hand sanitizer.
2. Bring the Specimen In - the specimen to the New Jersey Department of Agriculture’s lab or your nearest Rutgers Cooperative Extension for verification.
3. Take a Photo – with the GPS function turned on, take a photo of the egg masses or insect itself and email to:

SLF-plantindustry@ag.nj.gov

4. Call In – if you are unable to get a specimen or photo, leave a message detailing the location of the sighting as well as your contact information at **1-833-223-2840**